

InteGrade[®] Pro Link
User's Guide
Version 9.1

Pearson Digital Learning Part Number 606 000 361



Eleventh Edition (December 2004)

This edition applies to Release 9.1 of the InteGrade Pro teacher gradebook software, and to all subsequent releases and modifications until otherwise indicated in new editions or updates.

The data and names used to illustrate the reports and screen images may include names of individuals, schools, companies, brands, and products. All of the data and names are fictitious; any similarities to actual data and names are coincidental.

InteGrade Pro and CIMS are registered trademarks of Pearson Digital Learning

InteGrade Pro Link, ParentCONNECT, SASIxp, and the Pearson Digital Learning logo are trademarks of Pearson Digital Learning

Microsoft and Windows are registered trademarks of Microsoft Corporation.

AppleScript and Macintosh are registered trademarks of Apple Computer, Inc.

ParentLink is a registered trademark of Parlant Technology.

PhoneMaster is a trademark of US Netcom Corp.

Oracle is a registered trademark of Oracle Corporation.

Dell is a registered trademark of Dell, Inc.

dBASE IV is a registered trademark of dBASE Inc.

Crystal Reports is a trademark of Business Objects.

Copyright © 1998–2004 Pearson Digital Learning. Printed in the U.S.A. All rights reserved. No part of this book may be reproduced in any form or by any means, without permission in writing from Pearson Digital Learning



Contents

Contents

About the InteGrade Pro Link Software	1
Features of the InteGrade Pro Link Software	1
Technical Support Services	2
Installing the InteGrade Pro Link Software	3
Installing the InteGrade Pro Link Software	4
Directory Structure	6
InteGrade Pro Link Screen	7
Setting up the InteGrade Pro Software	17
Database Structures—The Output of InteGrade Pro Link Software	19
Current Grade File (ICGR)	19
Student Score File (ISTS)	20
Task Master File (ITMA)	21
Notes Master File (INMA)	22
Class Master File (ICMF)	23
Spreadsheet Master File (ISMF)	23
Student Demographic File (ISTD)	24
Student/Teacher Demographic File (ISDT)	25
Student Attendance File (ISAF)	27
Student Attendance Totals File (ISAT)	27
Student Spreadsheet Notes File (ISSN)	28
STULINK/STUNUM Pairing File (IPSS)	28
TCHNUM/TCHCODE Pairing File (IPTT)	29

Bookmark	Contents	Search	Usage	Glossary	Print	Back	Forward	First	Previous	Next	Last
----------	----------	--------	-------	----------	-------	------	---------	-------	----------	------	------



Contents



About the InteGrade Pro Link Software

The InteGrade Pro Link™ software takes data from InteGrade Pro gradebook files and combines them into one database. This database can then be read by various applications to provide parents access to homework and attendance information, via the telephone and the Internet.

Features of the InteGrade Pro Link Software

- It is a multiple-gradebook aggregation tool for SASIxp™ education software-compliant database construction and reporting.
- It is ParentCONNECTxp™ web-based application-compliant.
- It provides export of data from an aggregated database to files for use by Parlant Technology's ParentLink™ and US Netcom Corp's PhoneMaster™.
- It creates InteGrade Pro Link database files stored in SASIxp format. This makes the data available to ParentCONNECTxp™.
- It is ODBC-compliant (Microsoft® Windows® only).
- You can view the aggregated database through third-party tools such as Microsoft Access or Crystal Reports™.



About the InteGrade Pro Link Software

Technical Support Services

Pearson Digital Learning offers the following services to users with active maintenance agreements:

- InteGrade Pro technical support on the World Wide Web at <http://customerlink.pearsondigital.com/contact.asp>.
- Training: For information about the training services available from Pearson Digital Learning, or to schedule training, call (800) 736-4357.
- Customer Service: For information about other products available from Pearson Digital Learning call (800) 736-4357.

When Requesting Technical Support

Be sure you include the following information when requesting technical support:

- Your site number.
- The version number and platform of the InteGrade Pro software. For example, InteGrade Pro 9.1 for Windows or InteGrade Pro 9.1 for Macintosh.
- Your computer make and model. For example, Dell[®] Dimension XPS 166 or Apple Power Macintosh[®] 6100/60.
- The computer operating system and version number. For example, Windows 2000 or Macintosh OS X 10.3 running Classic 9.2.2.
- If the product is running on a local area network, the network operating system and version number.

Receiving Support from Other Vendors

If you purchased the InteGrade Pro software from a company other than Pearson Digital Learning, you should contact that company for technical support. You should have received information on technical support services available from that vendor at the time of purchase as well as upon receipt of the product.



2

Installing the InteGrade Pro Link Software

The InteGrade Pro Link software is available for download on the Customer Link Web site. The following sections contain the installation and configuration procedures for the software.



Installing the InteGrade Pro Link
Software

Installing the InteGrade Pro Link Software

InteGrade Pro Link System Requirements

Ensure that your platform meets the following installation prerequisites before installing InteGrade Pro Link.

Windows Operating System

- Windows® 98 SE, 2000, or Windows XP.
- A computer that meets the requirements for the version of Windows you are running.

Macintosh Operating System

- MAC OS 8.6, OS 9.2.2, or OS X with Classic 9.2.2. Note that InteGrade Pro only runs in Classic mode on MAC OS X. For MAC OS 8.6 and MAC OS 9.2.2 you also need the MAC OS Runtime for Java (MRJ) 2.2.5 or higher from <http://developer.apple.com/java/download.html>.

InteGrade Pro Link Installation for Windows

1. Sign in to the Customer Link Web site at customerlink.pearsondigital.com.
2. Go to the [InteGrade Pro Software Downloads](#) Web page. (On the Customer Link Welcome page, select InteGrade Pro in the Product Support Center list, and then click the IGPro 9.1 link under Downloads.)
3. Click the IGPro_9.1_WIN.zip link and save the file to the root directory on your hard disk, usually C:\.
4. Unzip the IGPro_9.1_WIN.zip file to the root directory on your hard disk.
5. In the unzipped folder, open the \ADMIN\IGPLINK folder.
6. Double-click Setup.exe and follow the instructions in the Installation wizard.
7. When the installation is complete, click Done to quit the installer.



Installing the InteGrade Pro Link Software

InteGrade Pro Link Installation Wizard for Macintosh®

1. Sign in to the Customer Link Web site at customerlink.pearsondigital.com.
2. Go to the [InteGrade Pro Software Downloads](#) Web page. (On the Customer Link Welcome page, select InteGrade Pro in the Product Support Center list, and then click the IGPro 9.1 link under Downloads.)
3. Click the IGPro_9.1_Mac.sit.hqx link. The file saves to your desktop.
4. Double-click the IGPro_9.1_Mac.sit.hqx file to unstuff it.
5. In the unstuffed folder, open the \ADMIN\IGPLINK folder.
6. Double-click Install InteGrade Pro Link and follow the instructions in the Installation wizard.
7. When the installation is complete, click Done to quit the installer.



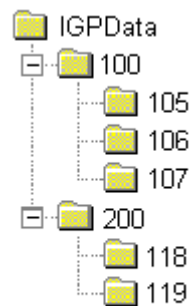
Installing the InteGrade Pro Link Software

Directory Structure

To extract data from teachers' gradebook files into the InteGrade Pro Link software, you must store your teachers' gradebook files in a network location accessible to the InteGrade Pro Link software.

Pearson Digital Learning suggests that you create a folder outside both your administration system and InteGrade Pro. Name this folder something you can remember, like IGPData. Use this folder when updating the files used by both software packages.

If you are using the SASIxp software, this IGPData folder will have sub-folders created in it when you export from the SASIxp software into the InteGrade Pro software. The first sub-folder has the same number as your School ID. Sub-folders created under the School ID folders have file names that correspond to your teachers' numbers. This figure shows an example:



If you are using another administration system, you need to manually create a School ID folder in the IGPData folder. You also need to create teacher folders in the School ID folder for each teacher who has a gradebook. The teacher folders should have filenames that correspond to your teachers' numbers.

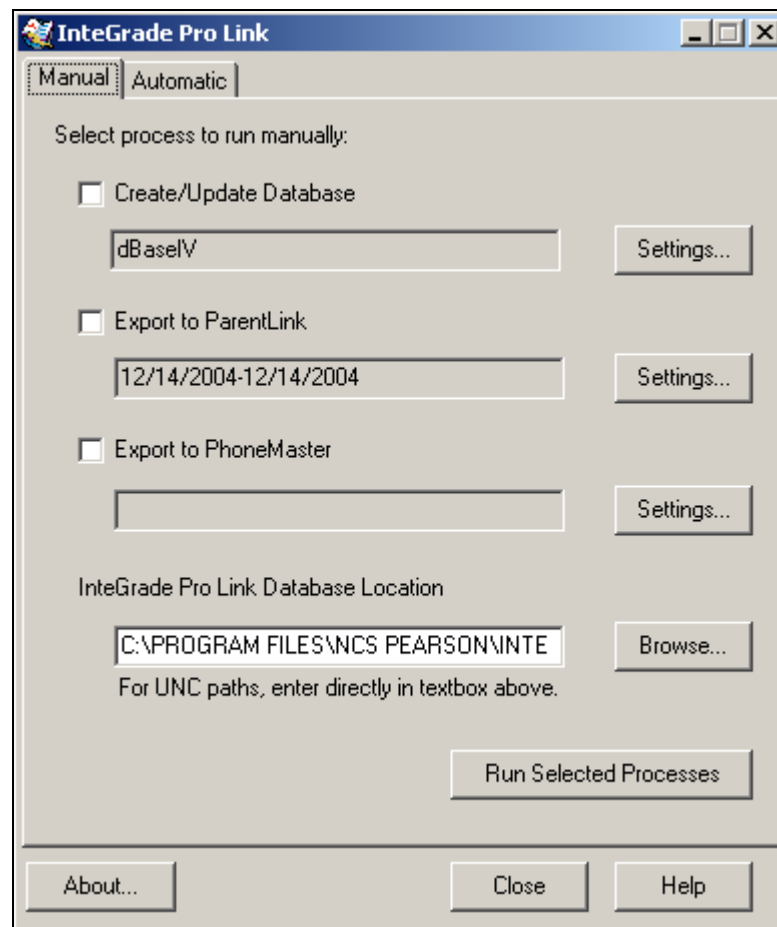


Installing the InteGrade Pro Link
Software

InteGrade Pro Link Screen

The InteGrade Pro Link screen contains two tabs, Manual and Automatic. You use the Manual tab to configure settings for immediate use, and you use the Automatic tab to configure settings to run the program at a more convenient time.

InteGrade Pro Link Manual Tab





Installing the InteGrade Pro Link Software

InteGrade Pro Link Automatic Tab

You can use both tabs to create and update the InteGrade Pro Link database and export to ParentLink or PhoneMaster software programs. The only difference between the two processes is that you run the manual process immediately, while you can schedule the automatic process to run at a later time. You can either create a batch file (or AppleScript®) or use the built-in timer feature to run the automatic process.



Installing the InteGrade Pro Link Software

Create/Update Database

The *Create/Update Database* checkbox displays on both tabs of the InteGrade Pro Link screen. You can adjust database settings by clicking Settings to control the type of data assembled in your InteGrade Pro Link database.

1. Under Settings, select the topmost folder that contains your teacher's gradebook files. Click Browse to search for the appropriate folder.
2. From the *InteGrade Pro Link database type:* list box, select the appropriate database type for your environment. For Windows 2000/XP®, use either dBase IV® or an established ODBC. For Macintosh systems, use dBase IV.



Installing the InteGrade Pro Link Software

3. If you select ODBC, click Server Login that displays to the right of the dBase IV/ODBC list box. The ODBC Server Login Information screen displays.

ODBC Server Login Information

Enter a login ID and password for the ODBC server:

Login ID:

Password:

InteGrade Pro Link makes special optimizations for Oracle databases. If you are using an Oracle database, please check below.

Yes, I use an Oracle database.

OK Cancel

4. Enter a login ID and password for the ODBC server. Contact your system administrator for the correct Login ID and Password.
5. If you are using an Oracle® database, select the checkbox.
6. Click OK. The system returns to the Create/Update Database Settings screen.
7. Under Database Contents, enter the *School Year* (single year or single term, not multiple years or terms). The school year must match the school year set in InteGrade Pro.
8. Enter the School ID. This number must match the School ID number set in the InteGrade Pro software.

You can verify the School Year and School ID by selecting Setup|Communication|Advanced Fields in the InteGrade Pro software.

9. Under Scores, select the checkboxes to indicate scores that mean assignments are missing.
10. Select the *Consider all scores below ___% to be failing* checkbox to indicate whether to flag scores as failed.



Installing the InteGrade Pro Link Software

Enter a percentage below which all scores are considered failing. For example, if you enter 45%, all scores in all the teacher gradebooks that are below 45% display as failing in the InteGrade Pro Link database.

Settings are specific to either manual or automatic mode. This means if you choose settings on the Manual tab, you have to reenter them on the Automatic tab. The settings are not saved between the two options.

Export to ParentLink

The *Export to ParentLink* checkbox displays on both tabs of the InteGrade Pro Link screen. You can export grade data, attendance data, or both for a specified date range.

The Grade Data export file is named ParLinkxxxx.TA, where xxxx is a four-digit compilation of single digit year and School ID. The export to the Teacher Assistant creates a master file with the following required data:

- Class data (course, section, period)
- Demographic data for each student (ID number, name, address)
- Data for each assignment (type, score, due date, out of)

The Attendance Data export file is named ParLinkxxxx.PAS, where xxxx is a four-digit compilation of single digit year and school ID. The export to the Attendance Server creates a master file with the following required data:

- Demographic data for each student
- Attendance data



Installing the InteGrade Pro Link Software

Export to ParentLink Settings

Indicate information to export:

Data type(s): Grade Data (Teacher Assistant) Attendance Data (Attendance Server)

Enter a date range for the export.

Absolute:
 From 14/12/2004 to 14/12/2004

Relative:
 From 14 days before, to 14 days after the current date.

Indicate a location to store the ParentLink file:

C:\PROGRAM FILES\NCS PEARSON\INTEGRADE PR

For UNC paths, enter directly in textbox above.

The exported attendance file excludes students with perfect (100%) attendance. The file contains information for students who have less than perfect attendance.

Exporting Grade and Attendance Data to ParentLink

1. From the Export to ParentLink Settings screen, check the data types you want to export. The default is both checkboxes selected. You can select either grade or attendance data.
2. Enter a range of days before and after the current date for both *Grade Data* and *Attendance data* to export.

The default is the last date range used by the InteGrade Pro Link software. If no default dates exist, the default range is plus and minus 14 days.

3. Click Browse to select a location to store the ParentLink files. The system defaults to the last location selected. A warning message displays if you do not define an existing export path before clicking OK.



Installing the InteGrade Pro Link Software

4. Click OK to save the settings. If you click Cancel to exit the screen, your settings are not saved.

Settings are specific to either manual or automatic mode. This means if you choose settings on the Manual tab, you have to reenter them on the Automatic tab. The settings are not saved between the two options.

Export to ParentCONNECTxp

To export to the ParentCONNECTxp software, you need only run the database creation procedure as described in the Create/Update Database section above.

When asked to set the path location for the InteGrade Pro Link Database, be sure the files are exported to the SASIxp Datafile folder. This is the folder that the Data Refresher accesses.

If you are using the ParentCONNECTxp software with District Integration, export the files to the school site Datafile folder. The nightly upload will move the files to the mirror site Datafile folder.

Export to PhoneMaster

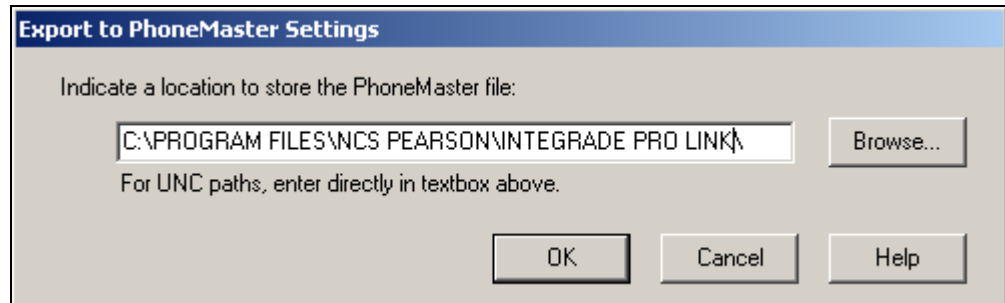
The *Export to PhoneMaster* checkbox displays on both tabs of the InteGrade Pro Link screen. It enables you to export student data from the compiled database to PhoneMaster's FromFile. The export to PhoneMaster creates a master file with the following required data:

- Student's ID number
- Up to 12 course names and the grades for those courses
- Number of absences
- Date of the last absence



Installing the InteGrade Pro Link Software

- Number of tardies
- Date of the last tardy



Exporting Student Data to PhoneMaster

1. From the Export to PhoneMaster Settings screen, either type the path where you want to store the PhoneMaster file or click Browse to select a path.
2. Click OK to exit and save settings, or click Cancel to exit without saving settings.

Settings are specific to either manual or automatic mode. This means if you choose settings on the Manual tab, you have to reenter them on the Automatic tab. The settings are not saved between the two options.

Manual Mode

You can run InteGrade Pro Link at any time using the Run Selected Processes button that displays on the Manual tab of the InteGrade Pro Link screen.

1. Click Run Selected Processes. A confirmation message displays.
2. Click Yes to continue or No to cancel.



Installing the InteGrade Pro Link Software

Automatic Mode

There are two ways to run InteGrade Pro Link in an automatic mode, either by creating a batch file or by using the automation timer feature.

The timer feature is available for the Windows platform only and must be used with InteGrade Pro Link running in the background. Windows NT comes with a built-in scheduling system that operates successfully with InteGrade Pro Link, without the need to use the automation timer.

Creating Batch Files

You can run the InteGrade Pro Link software automatically by creating a batch file of the commands that you want to execute during the automatic process.

Windows can run IGPLINK.EXE from a batch file or from the DOS prompt, (for example, C:\ Program Files\NCS Pearson\InteGrade Pro Link\IGPLINK/Automatic).

To change directories in the DOS prompt when the directory name is more than eight characters, be sure to type the name of the directory in quotes (for example C:\cd "program files").

For Macintosh computers, you can use Script Editor to create an AppleScript application to run InteGrade Pro Link automatically. For example:

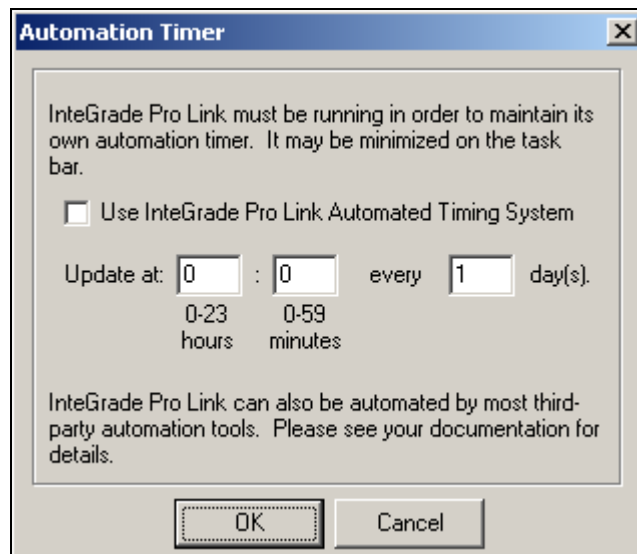
```
Tell application "InteGrade Pro Link" > Activate > Run automatically > Quit > End tell
```



Installing the InteGrade Pro Link Software

Automated Timer

You can use the built-in timer feature to run the InteGrade Pro Link software at a more convenient time. You can choose at what hour you want the InteGrade Pro software to run, as well as choose how many days to wait between runs.



1. From the Automatic tab, click Automation Timer.
2. Select the *Use InteGrade Pro Link Automated Timing System* checkbox.
3. In the *Update at:* field, type the hour at which you want the update to begin and how many days to wait between runs.
4. Click OK to begin the process, or click Cancel to exit.

Troubleshooting Log File

When InteGrade Pro Link is run, the system creates an AGGLOG.TXT file. This file contains log information which can be used to troubleshoot problems that occur during the run.



Installing the InteGrade Pro Link
Software

Setting up the InteGrade Pro Software

You must configure InteGrade Pro settings as well as local or network drive settings to make the InteGrade Pro software and the InteGrade Pro Link software communicate with each other.

The Current Grade feature and the option to export specific tasks are only available when using the InteGrade Pro Link software in conjunction with the InteGrade Pro software version 5.2 or later. In earlier versions of the InteGrade Pro software, a current grade is not formulated and all tasks are exported to the InteGrade Pro Link database.

Setting the Current Grade in the InteGrade Pro Software

The *Current Grade Spreadsheet* field in the Classes screen enables teachers to select the spreadsheet that displays the current grade for all students in a given class.

To view the Current Grade Spreadsheet:

1. In the InteGrade Pro software, from the Setup menu, select Classes.
2. In the *Current Grade Spreadsheet* field, select the spreadsheet (Skill or Numeric) from the drop-down list that you want to tag as the one that contains the most current grade for that class. The name of the tagged spreadsheet displays in italics.

To export tasks from the InteGrade Pro Software

The *Allow Export to InteGrade Pro Link* checkbox enables teachers to decide whether or not to export specific tasks to the InteGrade Pro Link software.

To export tasks to the InteGrade Pro Link Software:

1. In the InteGrade Pro software, from the Tasks menu, select Edit Tasks.
2. Select a task and make sure the *Allow export to InteGrade Pro Link* checkbox is selected. This action allows the task to be exported. If you do not select the checkbox, the task is not exported.

Bookmark	Contents	Search	Usage	Glossary	Print	Back	Forward	First	Previous	Next	Last
----------	----------	--------	-------	----------	-------	------	---------	-------	----------	------	------



Installing the InteGrade Pro Link Software



3

Database Structures—The Output of InteGrade Pro Link Software

This chapter describes the table structure created by the InteGrade Pro Link software.

Current Grade File (ICGR)

The Current Grade file stores the current grade for each student for a given course, section, and period.

Field Name	Type	Comments
<i>STATUS</i>	Alpha(1)	Required by SASIxp.
<i>SCHOOLNUM</i>	Alpha(3)	Same as SCHOOLNUM field in SASIxp.
<i>STULINK</i>	Numeric(5)	Same as STULINK field in SASIxp Student file (ASTU).
<i>PERMNUM</i>	Alpha(12)	Same as PERMNUM field in SASIxp Student file (ASTU). Same as Student # field in InteGrade Pro.



Database Structures—The Output of
InteGrade Pro Link Software

<i>Field Name</i>	<i>Type</i>	<i>Comments</i>
<i>CLASSKEY</i>	Numeric (5)	Foreign key for Class.
<i>SECTION</i>	Alpha (12)	Section is unique in SASIxp. Same as Section field in InteGrade Pro.
<i>COURSE</i>	Alpha (12)	Same as Course field in InteGrade Pro.
<i>PERIOD</i>	Alpha (12)	Same as Period field in InteGrade Pro.
<i>CURGRADE</i>	Alpha (7)	Student's current class percentage grade.
<i>LETGRADE</i>	Alpha (3)	Student's current class letter grade.
<i>FAILING</i>	Logical1	True if InteGrade Pro Link considers this score to be failing.
<i>NOTEKEY</i>	Numeric (5)	Foreign key for Note.

Student Score File (ISTS)

The Student Score file stores the student score for each task for a given course, section, and period.

<i>Field Name</i>	<i>Type</i>	<i>Comments</i>
<i>STATUS</i>	Alpha (1)	Required by SASIxp.
<i>SCHOOLNUM</i>	Alpha (3)	Same as SCHOOLNUM field in SASIxp School file (ASCH).
<i>STULINK</i>	Numeric (5)	Same as STULINK field in SASIxp Student file (ASTU).
<i>PERMNUM</i>	Alpha (12)	Same as PERMNUM field in SASIxp Student file (ASTU). Same as Student # field in InteGrade Pro.
<i>TASKKEY</i>	Numeric (5)	Foreign key for Task.
<i>SECTION</i>	Alpha (12)	Section is unique in SASIxp. Same as Section field in InteGrade Pro.
<i>COURSE</i>	Alpha (12)	Same as Course field in InteGrade Pro.



Database Structures—The Output of
InteGrade Pro Link Software

<i>Field Name</i>	<i>Type</i>	<i>Comments</i>
<i>PERIOD</i>	Alpha (12)	Same as Period field in InteGrade Pro.
<i>RAWSCORE</i>	Alpha (7)	InteGrade Pro raw score for the assignment. This is the score that InteGrade Pro displays in the viewer of InteGrade Pro.
<i>COMPSCORE</i>	Alpha (15)	Score for the assignment over Out Of.
<i>PERSCORE</i>	Alpha (7)	Percentage score.
<i>SCOREDATE</i>	Date	Date score was entered.
<i>NOTEKEY</i>	Numeric (5)	Foreign key for Note.
<i>CONTRIB</i>	Logical1	True if this score contributes to the current grade.
<i>MISSING</i>	Logical1	True if InteGrade Pro considers this score to be missing.
<i>FAILING</i>	Logical1	True if InteGrade Pro Link considers this score to be failing.

Task Master File (ITMA)

The Task Master file stores a task information record for each task on each spreadsheet for each class.

<i>Field Name</i>	<i>Type</i>	<i>Comments</i>
<i>STATUS</i>	Alpha (1)	Required by SASIxp.
<i>SCHOOLNUM</i>	Alpha (3)	Same as SCHOOLNUM field in SASIxp School file (ASCH).
<i>TASKKEY</i>	Numeric (5)	Unique key generated by export program.
<i>CLASSKEY</i>	Numeric (5)	Foreign key for Class.
<i>SPREADKEY</i>	Numeric (5)	Foreign key for Spreadsheet.
<i>SECTION</i>	Alpha (12)	Section is unique in SASIxp. Same as Section field in InteGrade Pro.
<i>CONTRIB</i>	Logical1	True if this score contributes to the current grade.



Database Structures—The Output of
InteGrade Pro Link Software

<i>Field Name</i>	<i>Type</i>	<i>Comments</i>
<i>LONGNAME</i>	Alpha (32)	Long name or description for the task.
<i>SHORTNAME</i>	Alpha (28)	Short name or description for the task (generated by InteGrade Pro).
<i>TYPESET</i>	Alpha (32)	The name of the task type set.
<i>TASKTYPE</i>	Alpha (32)	The name of the task type.
<i>DUEDATE</i>	Date	Date task was due.
<i>OUTOF</i>	Alpha (7)	InteGrade Pro task Out Of.
<i>SCALEFACT</i>	Alpha (7)	InteGrade Pro task scale factor.
<i>OUTOFSCALE</i>	Alpha (7)	InteGrade Pro Out Of scaled.
<i>MAXSCORE</i>	Alpha (7)	Maximum allowed score.
<i>NOTEKEY</i>	Numeric (5)	Foreign key for Note.
<i>TASKID</i>	Alpha (20)	InteGrade Pro Task ID Field.
<i>ASSIGNDATE</i>	Date	Date task was assigned.
<i>MASTERY</i>	Alpha (7)	Mastery score.

Notes Master File (INMA)

The Notes Master file stores all the notes used in the InteGrade Pro software.

<i>Field Name</i>	<i>Type</i>	<i>Comments</i>
<i>STATUS</i>	Alpha (1)	Required by SASIxp.
<i>SCHOOLNUM</i>	Alpha (3)	Same as SCHOOLNUM field in SASIxp School file (ASCH).
<i>NOTEKEY</i>	Numeric (5)	Primary Key field.
<i>NOTETEXT</i>	Memo	Note content.



Database Structures—The Output of
InteGrade Pro Link Software

Class Master File (ICMF)

The Class Master file tracks the classes for each teacher.

Field Name	Type	Comments
<i>STATUS</i>	Alpha (1)	Required by SASIxp.
<i>SCHOOLNUM</i>	Alpha (3)	Same as SCHOOLNUM field in SASIxp School file (ASCH).
<i>CLASSKEY</i>	Numeric (5)	Primary Key field.
<i>SECTION</i>	Alpha (12)	Section is unique in SASIxp. Same as Section field in InteGrade Pro.
<i>COURSE</i>	Alpha (12)	Same as Course field in InteGrade Pro.
<i>PERIOD</i>	Alpha (12)	Same as Period field in InteGrade Pro.
<i>TCHNUM</i>	Numeric (5)	Same as TCHNUM field in SASIxp Teacher file (ATCH). Same as Teacher code in InteGrade Pro.
<i>TCHCODE</i>	Alpha (6)	Same as Teacher code in TSS/Osiris, InteGrade Pro.
<i>TCHNAME</i>	Alpha (40)	Name of teacher. For use with ISAF.
<i>NAME</i>	Alpha (50)	User-editable name/description of class.
<i>NOTEKEY</i>	Numeric (5)	Foreign key for Note.

Spreadsheet Master File (ISMF)

The Spreadsheet Master file tracks the spreadsheets for each class for each teacher.

Field Name	Type	Comments
<i>STATUS</i>	Alpha (1)	Required by SASIxp.
<i>SCHOOLNUM</i>	Alpha (3)	Same as SCHOOLNUM field in SASIxp School file (ASCH).
<i>SPREADKEY</i>	Numeric (5)	Primary Key field.



Database Structures—The Output of
InteGrade Pro Link Software

<i>Field Name</i>	<i>Type</i>	<i>Comments</i>
<i>CLASSKEY</i>	Numeric (5)	Foreign key for Class.
<i>NAME</i>	Alpha (50)	User-editable name/description of spreadsheet.
<i>NOTEKEY</i>	Numeric (5)	Foreign key for Note.
<i>KIND</i>	Alpha (1)	Spreadsheet Kind: W (Numeric Weighted), P (Numeric Total Points), S (Skill), E (EndTerm), A (Attendance).
<i>SPREADID</i>	Alpha (20)	InteGrade Pro Spread ID Field.

Student Demographic File (ISTD)

The Student Demographic file stores information about each student in the gradebook.

<i>Field Name</i>	<i>Type</i>	<i>Comments</i>
<i>STATUS</i>	Alpha (1)	Required by SASIxp.
<i>SCHOOLNUM</i>	Alpha (3)	Same as SCHOOLNUM field in SASIxp School file (ASCH).
<i>STULINK</i>	Numeric (5)	Same as STULINK field in SASIxp Student file (ASTU).
<i>PERMNUM</i>	Alpha (12)	Student's permanent identification number.
<i>FIRSTNAME</i>	Alpha (12)	Student's first name.
<i>LASTNAME</i>	Alpha (25)	Student's last name.
<i>GENDER</i>	Alpha (1)	M, F, or space. Space = unknown gender.
<i>BIRTHDATE</i>	Date	Birth date.
<i>GRADELEVEL</i>	Alpha (3)	Grade Level field as in InteGrade Pro.
<i>HOMEROOM</i>	Alpha (12)	Homeroom field as in InteGrade Pro.
<i>TRACK</i>	Alpha (12)	Track field as in InteGrade Pro.
<i>TELEPHONE</i>	Alpha (25)	Telephone field as in InteGrade Pro.



Database Structures—The Output of
InteGrade Pro Link Software

Field Name	Type	Comments
<i>ADDR1</i>	Alpha (50)	Address 1 field as in InteGrade Pro.
<i>ADDR2</i>	Alpha (50)	Address 2 field as in InteGrade Pro.
<i>CITY</i>	Alpha (25)	City field as in InteGrade Pro.
<i>STATEPROV</i>	Alpha (5)	Province/State field as in InteGrade Pro.
<i>COUNTRY</i>	Alpha (25)	Country field as in InteGrade Pro.
<i>POSTALZIP</i>	Alpha (12)	Postal/Zip Code field as in InteGrade Pro.
<i>EMAIL</i>	Alpha (60)	Email Address.
<i>WORKPHONE</i>	Alpha (25)	Work Phone Number.

Student/Teacher Demographic File (ISDT)

The Student/Teacher Demographic file stores each teacher's customized student demographic information.

Field Name	Type	Comments
<i>STATUS</i>	Alpha (1)	Required by SASIxp.
<i>SCHOOLNUM</i>	Alpha (3)	Same as SCHOOLNUM field in SASIxp School file (ASCH).
<i>TCHNUM</i>	Numeric (5)	Same as TCHNUM in ICMF.
<i>TCHCODE</i>	Alpha (6)	Same as TCHCODE in ICMF.
<i>STULINK</i>	Numeric (5)	Same as STULINK field in SASIxp Student file (ASTU).
<i>PERMNUM</i>	Alpha (12)	Student's permanent identification number.
<i>OTHERID</i>	Alpha (12)	Student's alternative identification number.
<i>FIRSTNAME</i>	Alpha (12)	Student's first name.
<i>LASTNAME</i>	Alpha (25)	Student's last name.
<i>GENDER</i>	Alpha (1)	M, F, or space. Space = unknown gender.



Database Structures—The Output of
InteGrade Pro Link Software

Field Name	Type	Comments
<i>BIRTHDATE</i>	Date	Birth date.
<i>GRADELEVEL</i>	Alpha (3)	Grade Level field as in InteGrade Pro.
<i>HOMEROOM</i>	Alpha (12)	Homeroom field as in InteGrade Pro.
<i>TRACK</i>	Alpha (12)	Track field as in InteGrade Pro.
<i>TELEPHONE</i>	Alpha (25)	Telephone field as in InteGrade Pro.
<i>ADDR1</i>	Alpha (50)	Address 1 field as in InteGrade Pro.
<i>ADDR2</i>	Alpha (50)	Address 2 field as in InteGrade Pro.
<i>CITY</i>	Alpha (25)	City field as in InteGrade Pro.
<i>STATEPROV</i>	Alpha (5)	Province/State field as in InteGrade Pro.
<i>COUNTRY</i>	Alpha (25)	Country field as in InteGrade Pro.
<i>POSTALZIP</i>	Alpha (12)	Postal/Zip Code field as in InteGrade Pro.
<i>COUNSELOR</i>	Alpha (25)	Counselor field as in InteGrade Pro.
<i>EXTRA1</i>	Alpha (50)	Extra 1 field as in InteGrade Pro.
<i>EXTRA2</i>	Alpha (50)	Extra 2 field as in InteGrade Pro.
<i>EXTRA3</i>	Alpha (50)	Extra 3 field as in InteGrade Pro.
<i>EXTRA4</i>	Alpha (50)	Extra 4 field as in InteGrade Pro.
<i>EXTRA5</i>	Alpha (50)	Extra 5 field as in InteGrade Pro.
<i>EMAIL</i>	Alpha (60)	Email Address.
<i>WORKPHONE</i>	Alpha (25)	Work Phone Number.



Database Structures—The Output of
InteGrade Pro Link Software

Student Attendance File (ISAF)

The Student Attendance file stores student attendance records for each attendance incident found for each student in the gradebook.

<i>Field Name</i>	<i>Type</i>	<i>Comments</i>
<i>STATUS</i>	Alpha (1)	Required by SASIxp.
<i>SCHOOLNUM</i>	Alpha (3)	Same as SCHOOLNUM field in SASIxp School file (ASCH).
<i>SPREADKEY</i>	Numeric (5)	Foreign key for Spreadsheet.
<i>EVENTDATE</i>	Date	Date of the incident.
<i>STULINK</i>	Numeric (5)	Same as STULINK field in SASIxp Student file (ASTU).
<i>PERMNUM</i>	Alpha (12)	Student number. Same as in ISTD.
<i>CLASSKEY</i>	Numeric (5)	Foreign key for Class.
<i>CODE</i>	Alpha (5)	The type of incident recorded.
<i>NOTEKEY</i>	Numeric (5)	Foreign key for Note.

Student Attendance Totals File (ISAT)

The Student Attendance Totals file stores a record for each student in each attendance spreadsheet in each class.

<i>Field Name</i>	<i>Type</i>	<i>Comments</i>
<i>STATUS</i>	Alpha (1)	Required by SASIxp.
<i>SCHOOLNUM</i>	Alpha (3)	Same as SCHOOLNUM field in SASIxp School file (ASCH).
<i>STULINK</i>	Numeric (5)	Same as STULINK field in SASIxp Student file (ASTU).
<i>PERMNUM</i>	Alpha (12)	Student number.
<i>SPREADKEY</i>	Numeric (5)	Foreign key for Spreadsheet.



Database Structures—The Output of
InteGrade Pro Link Software

<i>Field Name</i>	<i>Type</i>	<i>Comments</i>
ABSENCES	Numeric (5)	Number of absences in spreadsheet.
LASTABS	Date	Date of last absence.
LATES	Numeric (5)	Number of lates in spreadsheet.
LASTLATE	Date	Date of last late.

Student Spreadsheet Notes File (ISSN)

The Student Spreadsheet Notes file stores a record for each student in each spreadsheet and a reference to the corresponding note.

<i>Field Name</i>	<i>Type</i>	<i>Comments</i>
STATUS	Alpha (1)	Required by SASIxp.
SCHOOLNUM	Alpha (3)	Same as SCHOOLNUM field in SASIxp School file (ASCH).
STULINK	Numeric (5)	Same as STULINK field in SASIxp Student file (ASTU).
PERMNUM	Alpha (12)	Student number.
SPREADKEY	Numeric (5)	Foreign key for Spreadsheet.
NOTEKEY	Numeric (5)	References note in INMA.dbt.

STULINK/STUNUM Pairing File (IPSS)

The STULINK/STUNUM Pairing file contains an Index linking each student's STULINK and PERMNUM.

<i>Field Name</i>	<i>Type</i>	<i>Comments</i>
STATUS	Alpha (1)	Required by SASIxp.
SCHOOLNUM	Alpha (3)	Same as SCHOOLNUM field in SASIxp School file (ASCH).



Database Structures—The Output of
InteGrade Pro Link Software

<i>Field Name</i>	<i>Type</i>	<i>Comments</i>
<i>PERMNUM</i>	Alpha (12)	Student number.
<i>STULINK</i>	Numeric (5)	Same as STULINK field in SASIxp Student file (ASTU).

TCHNUM/TCHCODE Pairing File (IPTT)

The TCHNUM/TCHCODE Pairing file contains an Index linking each teacher's TCHNUM and TCHCODE.

<i>Field Name</i>	<i>Type</i>	<i>Comments</i>
<i>STATUS</i>	Alpha (1)	Required by SASIxp.
<i>SCHOOLNUM</i>	Alpha (3)	Same as SCHOOLNUM field in SASIxp School file (ASCH).
<i>TCHCODE</i>	Alpha (6)	Same as Teacher code in TSS/Osiris, InteGrade Pro.
<i>TCHNUM</i>	Numeric (5)	Same as TCHNUM field in SASIxp Teacher file (ATCH).

Bookmark	Contents	Search	Usage	Glossary	Print	Back	Forward	First	Previous	Next	Last
----------	----------	--------	-------	----------	-------	------	---------	-------	----------	------	------



Database Structures—The Output of
InteGrade Pro Link Software