



Test Preparation Checklist

It is extremely important that you follow standard testing procedures when you administer the STAR Math[®] test to your students. Before you begin testing, please check the following:

- Make sure you have provided enough scratch paper and sharpened pencils for the students to use during the test.
- Explain the test to your students. The *Pretest Instructions* will walk you through a basic orientation with your students.
- Cover or remove any materials on the walls, chalkboard, and other areas that might help students answer the test items. Do NOT permit students to use calculators or other devices during the test.
- Arrange the desks or computer stations so that students have enough room to work on the test. This should include enough space for scratch paper so that students can perform the necessary calculations for the test items.
- Make sure there is enough light and ventilation in the test area, and make sure the area is free from noise. Try to avoid distracting locations or times when other students, school bells, or public address announcements can interfere with student concentration.



Pretest Instructions

(Reading Time: 2 Minutes)

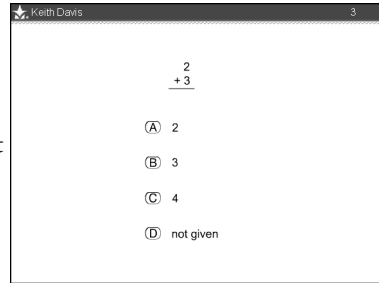
Teachers: Please read these instructions to your students before they take the STAR Math test. (You can use the enclosed materials to make handouts if you think it will help your students understand the test format.) Read each section aloud exactly as it is printed so that students know what to expect at each stage of the test.

You are going to take a test called STAR Math. It is a math test that has multiple-choice questions. You will answer the questions on a computer, but you can work the problems out on scratch paper. There are 24 questions on the test, and it should take you somewhere between 15 and 30 minutes to answer all of the questions.

This test will probably be harder than other math tests you have taken. That is because STAR Math selects questions just for you to see how much you know about math. You will probably even see math concepts or problems that you have never been taught in school. This is normal for how this special type of test works. Try not to get frustrated by this. Just try to give the best answer to each problem and you will do fine. Don't worry if someone finishes their test before you because every test is different. Don't worry about how many questions you think you get right, or how many you get wrong. Everyone will probably miss some of the questions. The main goal is for you to do the best you can.

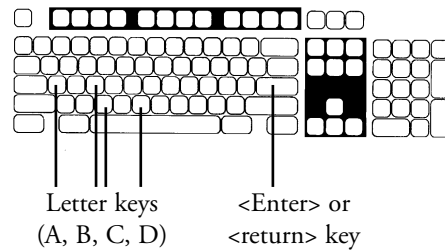
Picture 1

Each of the questions has a mathematical problem and a list of four possible answers. Your job is to choose the best answer for the question. Sometimes the correct answer might not be one of the choices in the list. For example, in the problem shown in Picture 1, two plus three equals five, but five is not one of the possible answers. In this case, choose “not given” as your answer.



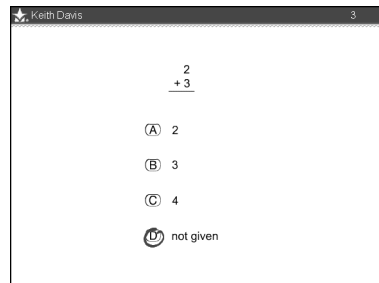
Picture 2

Choosing your answer on the computer is easy. Each possible answer has a letter next to it (A, B, C, or D). Just press the letter on the keyboard that matches the letter of your answer choice. Then press the <Enter> or <return> key. Picture 2 shows the location of each of the keys that you will use during the test.



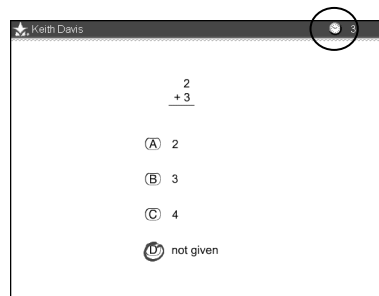
Picture 3

When you press the letter of your answer choice, a blue circle will appear around it as shown in Picture 3. The blue circle only shows you which answer you picked. It does not mean that you have selected the correct answer. You can change your answer before you press <Enter> or <return>. Just press the letter of your new answer choice. The program will draw the blue circle around your new choice. You cannot change your answer after you press <Enter> or <return>.



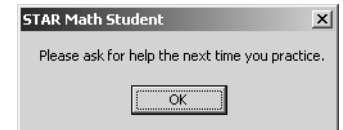
Picture 4

If you see a picture of a clock at the top right corner of your question as shown in Picture 4, time is almost up for that question. You should make your answer choice and then press <Enter> or <return>. If you do not choose an answer in time, you will see a message that says time has run out. The next question will come up in a few seconds, so be ready.



Picture 5

Before you take the test, you will get some practice questions. The practice questions look just like the questions on the real test. If you see this message when you are answering the practice questions, you should raise your hand and call the teacher or test monitor. He or she will know what to do.



When you finish answering all of the practice questions, the program will show you this message: “Great job with the practice test! Let’s go on to the actual test.” The real test will start automatically. Relax and get ready; the first question will come up soon. Keep answering the questions until the computer tells you that you have finished the test.

Don’t forget that you can work the math problems out on scratch paper. If you do not know the answer to a question, go ahead and choose what you think is the best response.

When you are finished with the test, tell the teacher or test monitor that you are done so the next student can get started.

If you have any questions about this test, please ask them now. You can ask for help before you start the test and during the practice questions. Once the test starts, the teacher will not be able to explain any of the questions or help you choose an answer. Also, the teacher cannot tell you if you picked the right answer.

Have fun, and do your best!



Pretest Instructions

Picture 1

This is what the questions look like.

Keith Davis 3

$$\begin{array}{r} 2 \\ + 3 \\ \hline \end{array}$$

(A) 2

(B) 3

(C) 4

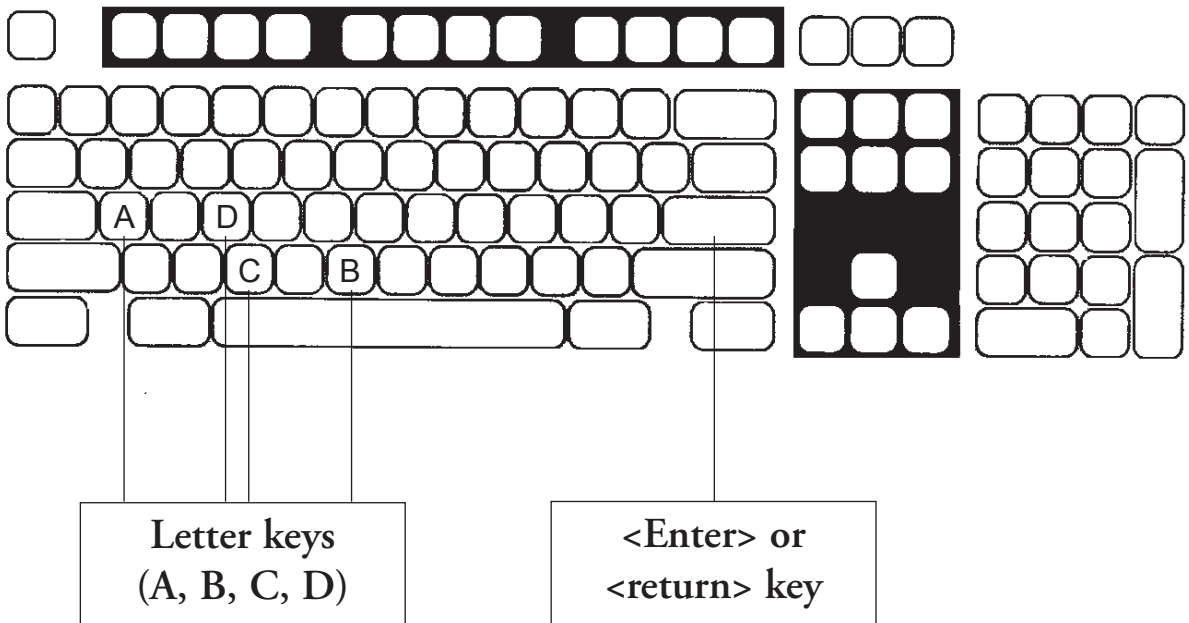
(D) not given



Pretest Instructions

Picture 2

Use these keys on your keyboard to choose the letter of your answer.
Then press the <Enter> or <return> key.





Pretest Instructions

Picture 3

When you pick an answer, you'll see a blue circle around your choice. This shows the answer you chose. It does not mean you picked the correct answer.

Keith Davis 3

$$\begin{array}{r} 2 \\ + 3 \\ \hline \end{array}$$

(A) 2

(B) 3

(C) 4

(D) not given

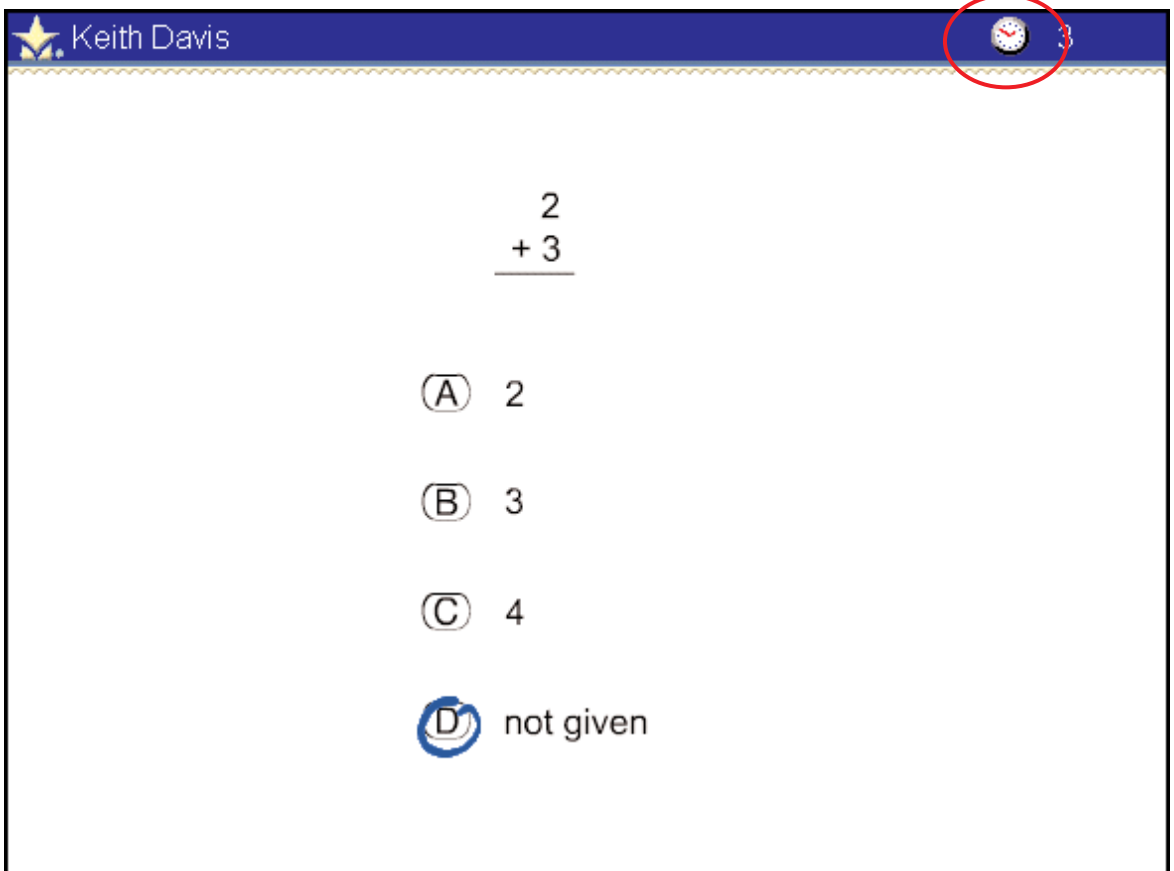


Pretest Instructions

Picture 4

A clock in the top right corner of the question screen means that time is almost up for the question.

Choose your answer quickly.

A screenshot of a STAR Math question screen. The top header is dark blue with a yellow star icon on the left and the name "Keith Davis" in white text. On the right side of the header, a small clock icon is circled in red. The main content area is white and contains a math problem:
$$\begin{array}{r} 2 \\ + 3 \\ \hline \end{array}$$
 Below the problem are four multiple-choice options: (A) 2, (B) 3, (C) 4, and (D) not given. The option (D) is highlighted with a blue circle.



**STAR
Math[®]**
Pretest Instructions

Picture 5

If you see this message during the practice session,
call the teacher or test monitor for help.

